

Paste-Spreading toothbrush

UniBRUSH

UniBrush with the Injection During Brushing (IDB) method, applies a fixed rate of the paste continuously onto the surface of your tooth during brushing.



2008 Miss Vietnam

This ensures that toothpaste is not mixed with many kinds of germs, allowing you to feel freshness, and allowing the medical action of the toothpaste to work effectively. Additionally it reduces the potentially harmful effects of abrasives in the toothpaste.

apOL Inc.

Great innovation in oral hygiene

UniBrush (The Paste-Spreading Toothbrush)

**Do you still put toothpaste onto a brush ???
If you use UniBrush**

It will apply your chosen amount of paste continuously onto the surface of your tooth during brushing. Compared with the brushing Paste-Injection before brushing method, it is much more effective and you can feel far greater freshness.

Automatically, a selected quantity of paste applies onto the brush continuously and is spread evenly onto the surface of your tooth.

UniBrush allows you to use clean paste which is not mixed with saliva, food waste or germs so you can brush your tooth with greater efficiency.

UniBrush doesn't cause attrition due to abrasives.

When we brush our teeth by applying paste onto a brush manually, the majority of the paste is applied to the front tooth inside the part of the mouth where the brush is first used.

This kind of brushing causes one-side wear of the tooth by abrasives.

UniBrush is clean and simple to use!

When you use UniBrush, you don't need to waste time and effort applying paste onto the brush.

You don't need to share a tube of paste with other people, so it's much more sanitary.

Traditionally, when we brush our tooth,

toothbrush and toothpaste are separate, and we must perform many annoying and useless actions. In other words, when we brush our tooth, we have to pick up the toothbrush with one hand and the toothpaste with the other. Then we have to open the toothpaste tube, wring it out, apply paste onto the brush head, close the tube, put it back in the right place and finally we can brush our tooth.

But what if the toothpaste on the brush falls off We must perform all those annoying actions once again. **Moreover how about the young children who cannot brush their tooth well It is very difficult for them to apply the paste onto the brush head by themselves and it surely does not encourage them to brush their tooth well.**

Moreover, if we use the Injection Before Brushing (IBB) method, we cannot spread the paste evenly onto our tooth, so when we brush our tooth, the majority of the paste is applied onto tooth at the front of the mouth, where the brush was first applied. It may cause the one-side wear of the tooth due to abrasives in the paste. In addition, we often share a tube of toothpaste with our families or housemates, so we are exposed to many kinds of infectious germs which can cause tooth decay or dental disease.

So, the people at Apol have developed Unibrush. Of course, there are many toothbrushes around the world that have paste within them. But they are simply paste and a brush together and after using such products several times, they must be thrown away. Even if you attempt to use them again, the paste has become hard and is very dirty. It is a waste of resources and is uneconomical to use when brushing three times a day. Unfortunately, not only in Korea but all over the world, there wasn't any toothbrush to solve these problems, until now!

Apol have developed the rechargeable toothpaste-ejecting Unibrush which uses the Pressure Balancing principle (Pascal's Principle). It is different from the Injection Before Brushing (IBB) method in which we have to apply the paste onto the brush head. They have developed the Injection During Brushing (IDB) method. It continuously applies a fixed dose of paste directly onto the tooth during brushing. Using this revolutionary brush will solve all those unsanitary and unnecessary problems. They were eager to develop a perfect kind of toothbrush for people to use anytime, anywhere, without performing such irritating actions as applying the paste.

1. - The Unibrush consists of a toothpaste cartridge containing 40g of paste in the grip of the brush (enough for 15 days). You don't need to use any special kind of toothpaste and it is rechargeable.
2. - A pumping ball behind the grip releases compressed air inside the cartridge into the grip of the brush.
3. - A Silicon duct in the bristles of the toothbrush opens and a quantity of paste comes out of the cartridge in a continuously even stream.
- 4.- By pushing the pressure release button, the compressed air inside the paste pack is released. Then the silicon duct closes due to its own elasticity.
5. - By pushing the pumping ball behind the grip 1~3 times, it compresses the air inside the cartridge, making the duct in the brush open and the paste come out continuously due to air pressure. By pushing the pressure release button, the compressed air inside the paste pack is released and the duct is closed to stop spread of paste.
6. - Moreover, you can use the Unibrush again and again by recharging it, and it is easy to replace the brush-head. Our intention is to reduce waste at the same time as taking care of the customers' oral health by manufacturing pro-environmental and economical products.

HOW TO USE UniBrush

1. How to recharge the paste

Turning the U cap at the end of grip to the left, and pull it out and separate the paste container from the grip.

Fit its tip into the toothpaste tube filled with paste and squeeze paste out of toothpaste the tube.

2. Start brushing after pushing the pumping-ball 1-3 times

by plugging up the air hole with thumb, and the toothpaste in the cartridge will be spread on the tooth as long as you are brushing effectively.

3. UniBrush spreads toothpaste

on your tooth directly during brushing so that you can brush your tooth effectively. It means you can brush your tooth with the paste that is not polluted with bacteria or food waste in your mouth during all the time you are brushing.

4. Be sure to deflate

by pushing the release button on the air-pump after use it for stopping paste-spouting

The Replaceable Bristle Head

The non-toxic silicon valve between the bristles injects a fixed amount of paste onto the tooth using compressed air and after use it contracts and closes via its own elasticity.



Ergonomic Semi-Permanent grip

The grip is ergonomically designed to evenly distribute grip and prevent slipping and shaking. You won't believe how fresh you feel.

Just by pushing the pumping ball placed at the end of the grip with the thumb, the toothpaste in the cartridge is to be putted on the nipple placed among the bristles.

✓ The right or left hand orientation automatically places the bristles at the 45 degrees recommended by the ADA

The rechargeable Toothpaste container

For oral hygiene, Unibrush has its paste in the paste container. Paste-sharing may spread dental diseases, but using Unibrush will relieve this concern.

Shorter

Longer

What does soft mean and why is it so important ?

Soft toothbrushes have nylon bristles of 0.007" diameter or less. These bristles are soft enough to remove sticky plaque but not so hard that they cause damage to the soft tissues of the gum.

All bristles should be end-rounded, which means that the toothbrush maker has run the bristle tips through a polishing machine to round the rough cut ends of the filaments.

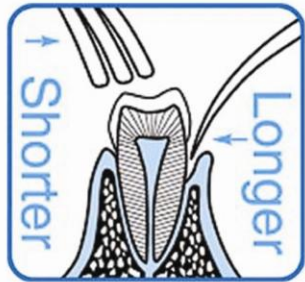
The Pressure Release Button
(Push it to stop applying the paste)

The Pumping Ball
Push Here



The only toothbrush all-in-one

“Double-Tiered, Dual-Action Bristles”



IT IS A NEW AND REVOLUTIONARY TOOTHBRUSH that effectively brushes and flosses AT ONCE removing plaque, a sticky film of bacteria that not only attacks your gums and teeth but also causes bad breath and dental decay The Sensational Clean That Lasts! When you don't or can't floss, It's the next best thing!



The Replaceable brush head for the Unibrush



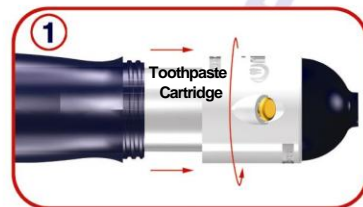
Shorter and Thicker Bristles perform regular brushing of the surface of your tooth.



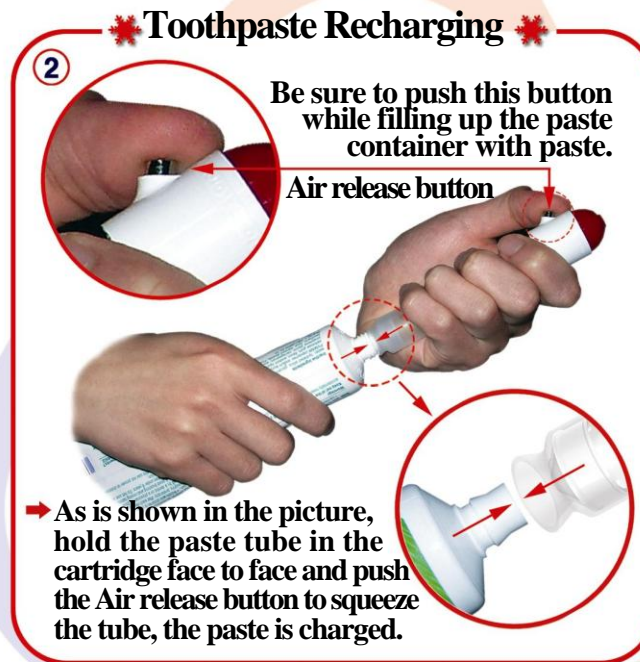
Longer, Thinner, End-rounded and Polished Bristles easily penetrate deeper between tooth and floss between teeth effectively removing bacteria and plaque below the gum line, not just along the gum line. They are gentle on gums and tooth.

Toothpaste-Recharge and the Cartridge

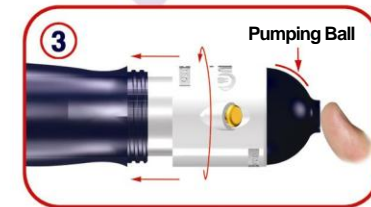
- ➡ The Unibrush continuously and directly applies the paste onto the surface of your tooth during brushing.



- ➡ To separate the paste container from the grip, turn the U cap at the end of grip to the left. And pull it out.



- ➡ As is shown in the picture, hold the paste tube in the cartridge face to face and push the Air release button to squeeze the tube, the paste is charged.



- ➡ Put the paste container into the grip and turn the U cap to the right to fasten it. And start brushing after pushing the pumping ball 1~3 times plugging up the air hole with thumb.

➡ The paste Cartridge of Unibrush...

Compared to traditional brushing, where people often share a tube of paste with their family or house mates, the paste cartridge of Unibrush lets you use clean paste and releases a fixed rate of paste directly onto your tooth during brushing. It is more sanitary and it doesn't carry the risk of tooth attrition due to abrasion. It's easy to keep and carry with you, and you can recharge the paste so it is very economical.

The UniBrush

Just Push the pumping Ball at the end of grip plugging up the air hole, with thumb, the toothpaste is to be spread on the tooth while you are brushing effectively and automatically.

- ▶ Replaceable Brush Head
- ▶ Replaceable Toothpaste Cartridge

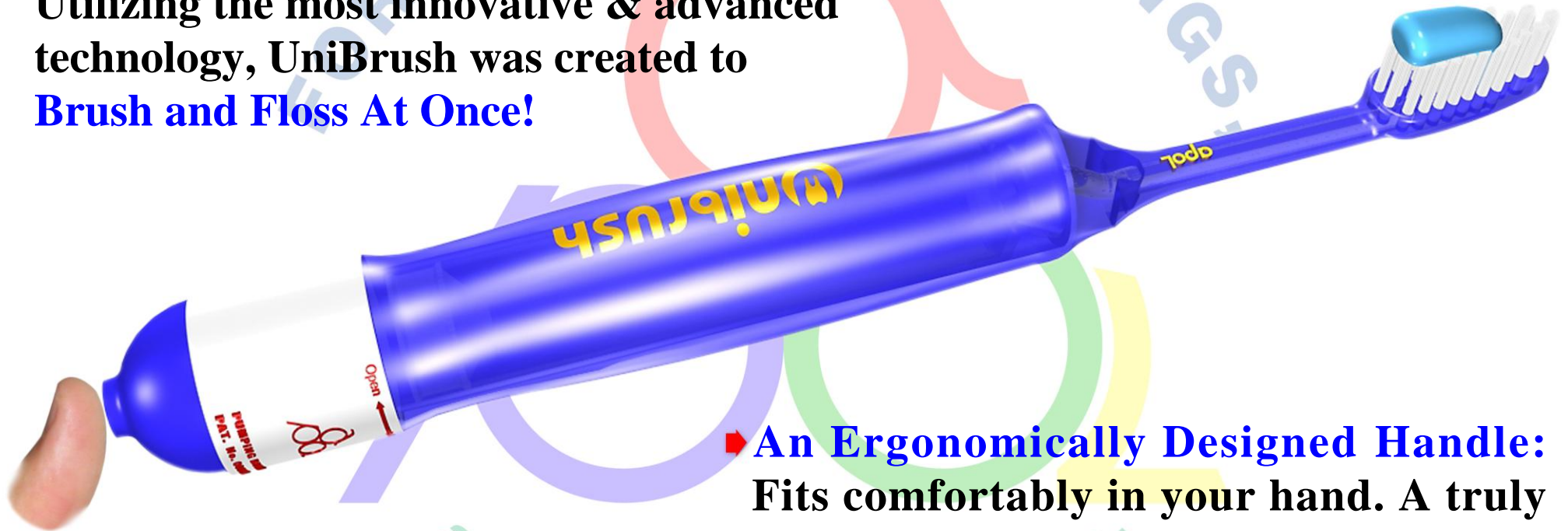


- ▶ **What are the bristles made of?**
UniBrush bristles are made of a material called "Poly Buthyl Teleputalate". This special micro-textured bristles were chosen. Because it is softer and more elastic and durable than your average nylon or plastic bristles

The UniBrush

The only toothbrush all in one in the world

- ◆ **Double-Tiered, Dual-Action Bristles:**
Utilizing the most innovative & advanced technology, UniBrush was created to **Brush and Floss At Once!**



- ◆ **An Ergonomically Designed Handle:**
Fits comfortably in your hand. A truly innovative design that ensures superior performance.